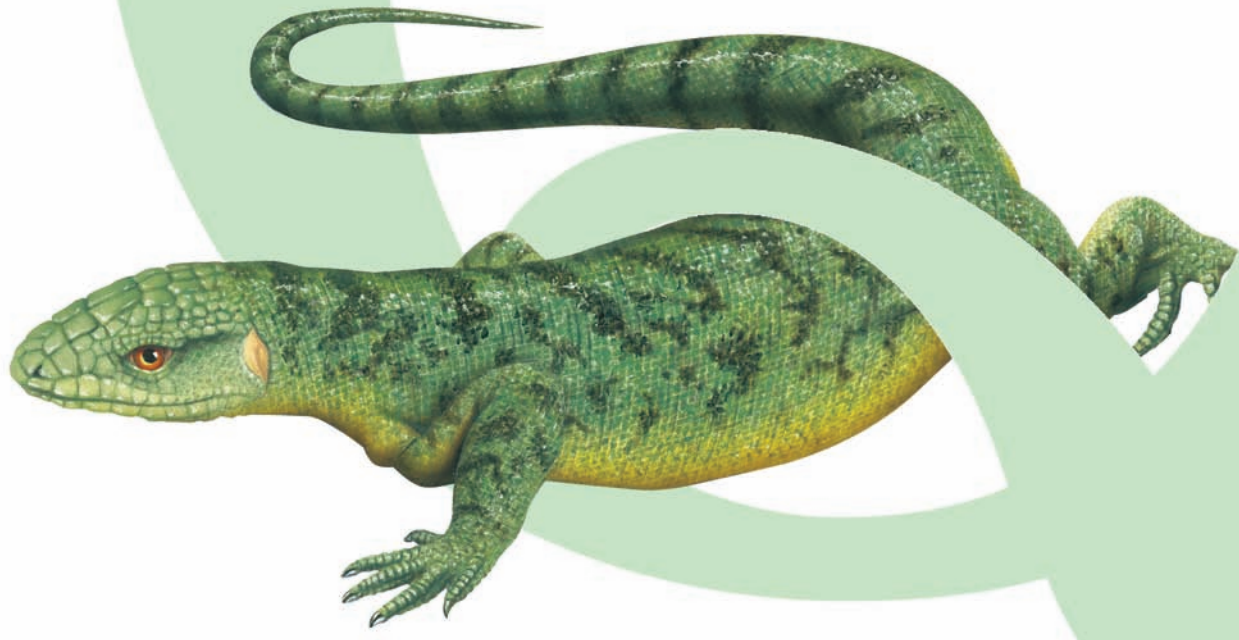


SYSTEM
monitor

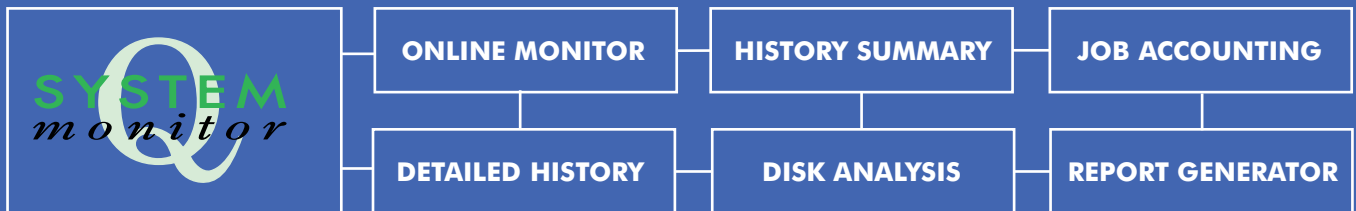


A monitor to watch
over your system



IBM System i monitoring and reporting made simple

- Functionally rich, QSystem Monitor helps organisations to meet Service Level Agreements and reduce downtime.
- Automation negates the need for conventional, time-consuming monitoring, allowing operators to become pro-active to system threats instead of 'fire-fighting'.
- Avoid unnecessary outages or downtime, increase efficiency, and create genuine cost savings.
- Monitors single, multiple or LPAR systems from a single console.
- Auto-export graphical reports to Intranet/Internet.
- Ability to monitor CPU-hogging jobs in real-time.
- Easily accessible LPAR summary information.
- System Environment data screen includes level of i5/OS currently running, PTF level, PTF installed date and feature code.
- Visual and audio prompts to alert staff to system errors.
- 'Drill Down' disk information, IFS monitoring, disk collections parallel processing and scheduling.
- SNMP enables passing performance information to enterprise management systems.



ONLINE MONITOR

Real-time performance network monitoring and reporting for comprehensive centralised management. Sustain the performance of your IBM System i with unique real-time monitoring.

System Monitoring: Pro-active IBM System i management for optimum performance.

- Measure and track response times, system overheads, CPU, output queue status, transactions per hour and many other metrics.
- Greatly extended, comprehensive monitoring metrics.
- Extended, user-definable screen layout.
- Exceeded threshold history log.
- Action jobs using excessive CPU automatically.
- Comprehensive cross system PTF reporting.
- Monitor your cache battery life in real-time.

Network Monitoring: Verify network components are performing correctly and are available.

- Are bottlenecks degrading your system?
- Sophisticated network and communications error monitoring.
- Comms Utilisation/Throughput.
- Controller/Device/Line/Network Status.
- IOP Utilisation.

Job Monitoring: Ensure that critical jobs are active and performing correctly.

- Full job monitoring.
- Automatic user-definable CPU usage restriction.
- Job Status Check, including lock wait.
- Monitor that jobs are running correctly, monitor various components of jobs, including number of threads.

Disk Monitoring: Ensure your DASD is being used efficiently.

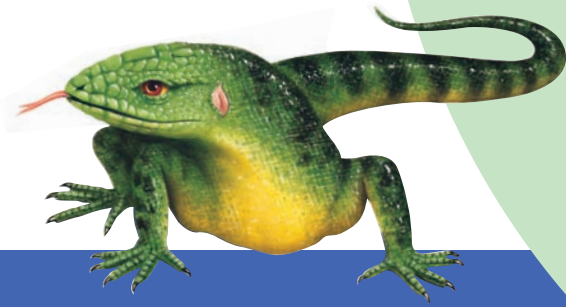
- Full comprehensive disk monitoring, including IFS.
- Highlight sudden disk growth, monitor temporary storage usage by job, user, subsystem or entire system.
- Monitor object sizes in real time.
- Independent ASP monitoring.

Availability Monitoring: Prevent downtime! Ensure all systems remain available 24-7.

- Highlight system availability.
- Monitor job, communications and network interface statuses, providing full availability.
- Monitor journal lag from partition to partition or system to system, ensuring availability integrity.

FOR THE MOST POWERFUL PERFORMANCE

QSystem Monitor is a fully graphical, networked, real-time performance management tool. All critical areas of performance can be automatically and centrally monitored as well as providing easy-to-use historical summaries, disk analysis reports and user based performance statistics.



HISTORY SUMMARY

Graphical Analysis and Forecasting.

- Long-term retrospective analysis.
- Long-term predictive forecasting.
- Service level agreements.

DETAILED HISTORY

Resolve problems instantly – detailed analysis of performance.

- Graphical display of historical data over any time period (month, week, day).
- Drill-down capability.
- Easy identification of CPU-hogging jobs.

DISK ANALYSIS

Complete DASD monitoring.

- Graphical display of Disk space usage.
- Analysis by library, attribute, last-used date or other.
- Review data across periods for capacity planning or trend analysis.
- IFS and native file system monitoring.
- Reporting.

JOB ACCOUNTING

Total Accountability.

- Track resource usage by user and user groups.
- Easy access to historical resource usage.
- Detailed information on spooled files and print volume.

REPORT GENERATOR

Achieve total automation of your regular reports.

- Simple management reporting in all areas - ideal for audit purposes and capacity planning.
- Easy-to-schedule automated reporting saves time and resources.

"On several occasions the CCSS solution has allowed us to rapidly prevent and resolve situations which would have resulted in severe outages."

Robert York, Newell Rubbermaid
Director of IT Operations and Technology

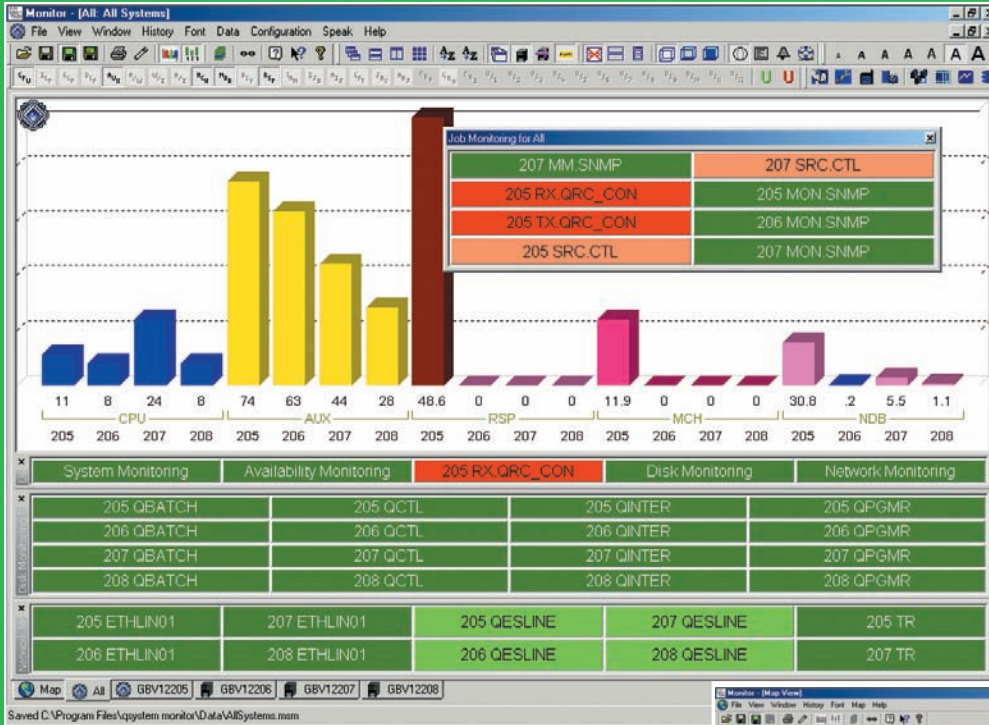
SYSTEM
monitor

QSYSTEM MONITOR

CCSS created a range of powerful automated operations and monitoring software solutions specifically for the System i platform. Today these solutions are helping leading corporations to manage their systems more effectively, worldwide.

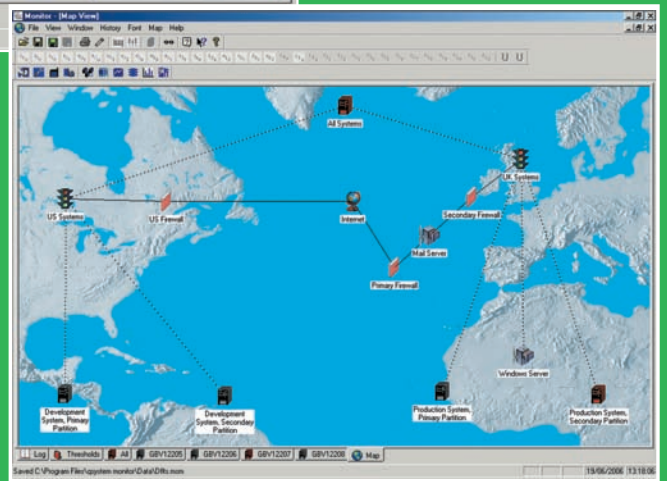
QSystem Monitor, designed specifically for the IBM System i platform, produces a detailed overview of the system status. Multiple critical system functions that dictate performance are measured and recorded. Historical data targets problems and allows users to

anticipate future requirements. System Managers/Support staff can resolve recurring as well as isolated problems throughout the network and users can detect and react to events on multiple, networked and LPAR systems from a central console.



REMAINING ALERT

24 hours a day, 7 days a week, QSystem Monitor identifies problems before they escalate and is especially useful when monitoring a large number of System i machines even those based across different time zones. QSystem Monitor is vigilant to situations such as an impending disk or processor failure. Another valuable benefit lies in QSystem Monitor's easy to use reporting capabilities. Technical system reports can plot trends and identify problems while Management Summary Reports are ideal for Service Level Agreements.



International Agent

CCSS (Europe) Limited
 6 The Courtyard
 Gillingham Business Park
 Gillingham Kent ME8 ONZ England
 Tel: +44 (0)1634 370444
 Fax: +44 (0)1634 370555
 Email: info@ccssltd.com

CCSS Deutschland GmbH
 Hinter Hoben 149
 53129 Bonn
 Deutschland
 Tel: +49 (0)228 9168 207
 Fax: +49 (0)228 9168 102
 Email: Info@CCSSEurope.de

CCSS (USA) Corporation
 Lynnbrooke Centre, Suite 100
 2435 Lynn Road
 Raleigh, NC 27612, USA
 Tel: 919 256 8260
 Fax: 919 256 8271
 Email: us.sales@ccssltd.com

www.ccssltd.com