

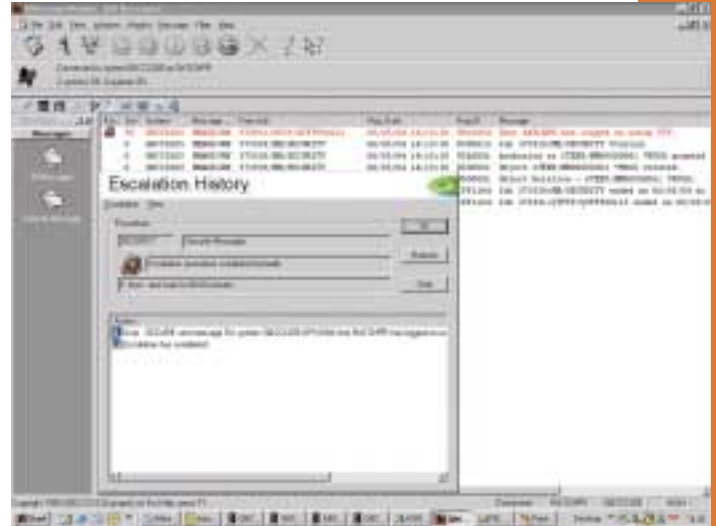
REAL-TIME SECURITY MONITORING

QMessage Monitor Version 6

MESSAGE
monitor

Real-Time Security Monitoring

- Monitor the audit journal for security breach messages.
- Filter message conversion to the audit journal.
- Monitor QHST log entries.
- Meet strict internal auditing standards & external legal obligations including Sarbanes-Oxley internal control audit specifications.
- Choose from **many hundreds** of possibilities for auditing on the iSeries.



Real-time security monitoring



Monitor and Audit

- Authority failures.
- FTP Access.
- System value changes.
- User profile changes.
- Programs using QSECOFR authority.
- Restored objects with QSECOFR authority.
- Invalid password attempts.
- Users who delete spool files.
- Users who delete objects.
- Start times of scheduled jobs.

Save Time and Increase Operations Efficiency

- Time stamp details of when a message was received on the message queue.
- Save message variables and reuse later rather than retyping the same information.
- Instant visual identification of colour specific messages in log inquiries.
- Additional support for the internal modem.
- Work with rogue jobs according to individual job, user profile or job name and instantly apply all normal OS/400 functions via iSeries Navigator.

Take Action

- Detect, target and audit in real-time, specific threats that can disrupt program stability, cause loss or corruption of sensitive data, breach protocols, violate system integrity and leave the iSeries wide open to both accidental and deliberate security risks.
- Attach escalation procedures to your security messages and inform individuals and groups of suspicious activities contact them according to authority, staff availability and preferred communication device.
- Increase visibility of actions and accountability amongst users by pinpointing security infringements.
- Receive real-time alerts of scheduled jobs that haven't started.
- Reduce problem analysis times with instant access to additional message data.
- Increase your modem options or dedicate one purely for 24/7 pager processing.



QRemote Control Latest Features

REMOTE
control

- Run QRemote Control as a Windows Service - run unsupervised and auto restart when PC is rebooted unsupervised. No need for the PC to be logged on!
- In-built SMTP client – send mail using any email server that supports the internet standard including Lotus Notes.
- Reply to messages, run commands and programs or check the status of a message escalation directly from your mobile phone.
- Fully audit compliant through QMessage Monitor's message and reply logs.



PC Control Centre - comprehensive data display screens

- Incredible versatility for business applications such as two-way field staff data communications.

Contact CCSS to discuss your messaging and audit requirements or to arrange a full solution demo.

CCSS (Europe) Limited

6 The Courtyard
Gillingham Business Park
Gillingham Kent ME8 0NZ England
Telephone: +44 (0)1634 370444
Fax: +44 (0)1634 370555
Email: info@ccssltd.com

CCSS (Deutschland) GmbH

Hinter Hoben 149
53129 Bonn
Deutschland
Telephone: +49 (0)228 9168 207
Fax: +49 (0)228 9168 102
Email: info@CCSSEurope.de

CCSS (USA) Corporation

3737 Glenwood Avenue, Suite 100
Raleigh
NC 27612 USA
Telephone: 919 573 6126
Fax: 919 573 6026
Email: us.sales@ccssltd.com